



TO LET

Range of Office Suites from

296-6,351 sq.ft

(27-590 sq.m)



Centre House, Court Parade, Aldridge, West Midlands. WS9 8LT

- Flexible rental terms
- Onsite parking available
- CCTV external security with Intercom entrance
- Located close to the main town shopping centre

LCP.

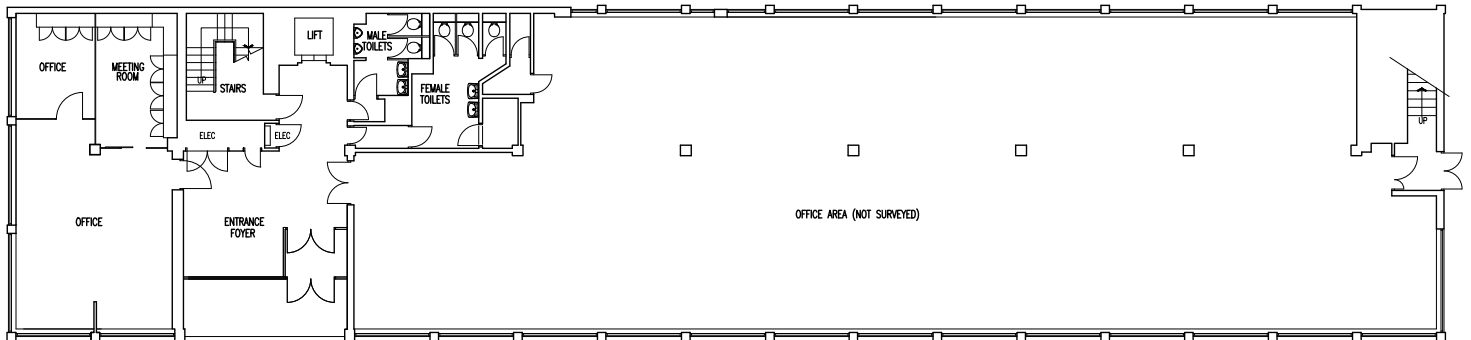
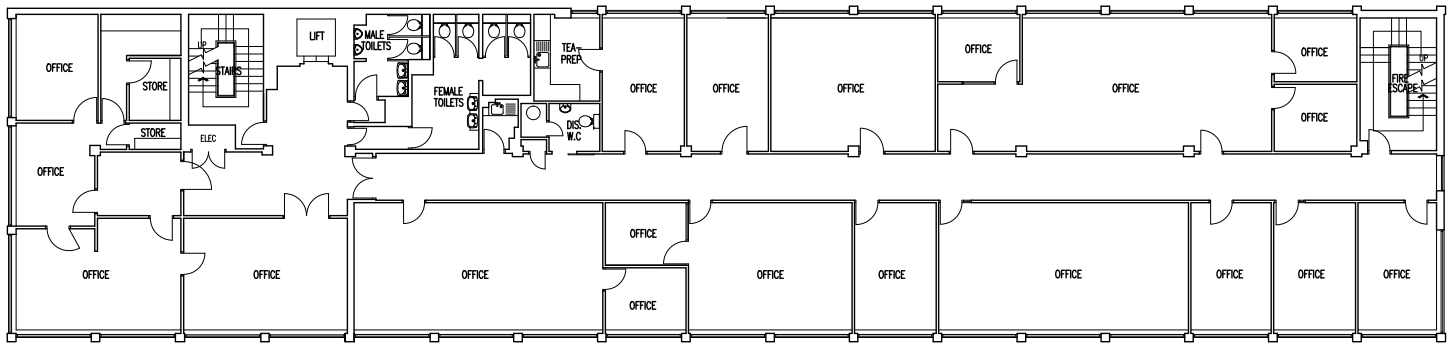
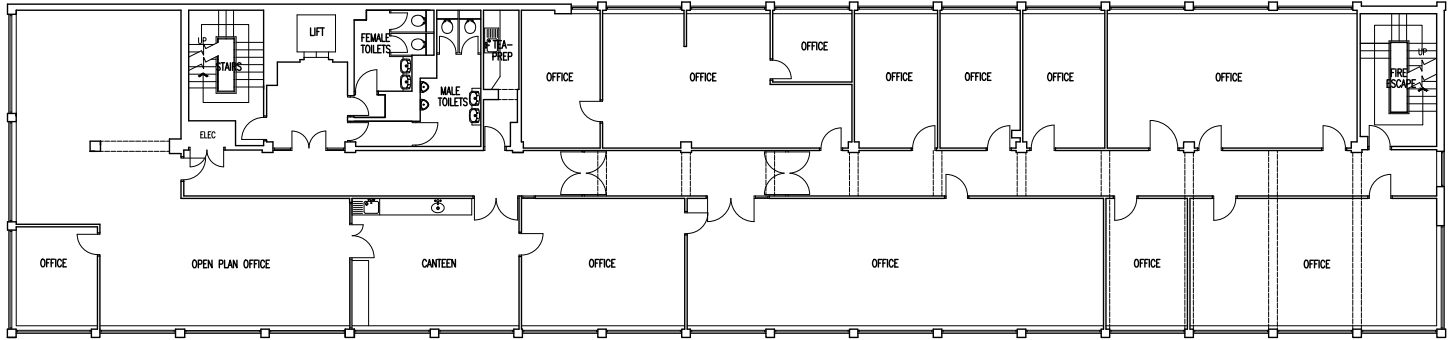
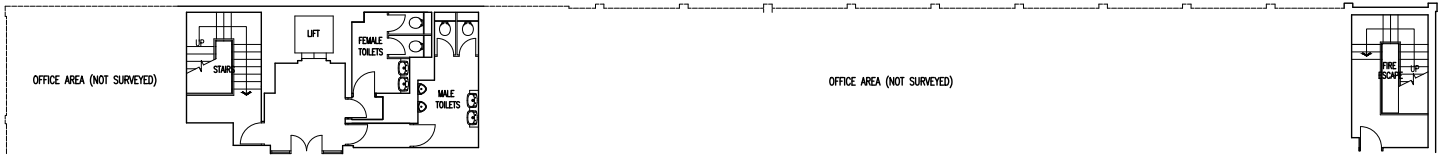
part of MCore

**01384
400123**

searchlcp.co.uk



Centre House, Court Parade, Aldridge, West Midlands. WS9 8LT



GROUND FLOOR PLAN

Centre House, Court Parade, Aldridge, West Midlands. WS9 8LT



Description

- Office suites from 296 – 6,351 sq.ft (27 – 590 sq.m)
- Four-storey office building
- CCTV external security
- Intercom entrance
- Refurbished reception and lift to all floors
- Toilets and communal kitchen facilities
- Carpeted, CAT II lighting and heating installed



Rent & Rates

Available on application. The property is elected for VAT.

Service Charge & Insurance

The units participate in a service charge scheme. The Landlord will insure the premises the premiums to be recovered from the tenant.

Energy Performance

Further information available on request.

Planning

An incoming tenant must satisfy themselves that their proposed use is acceptable to the Local Planning Authority.

Legal Costs

Each party is to be responsible for their own legal and professional costs incurred in any transaction.

Location - WS9 8LT

Centre House is a four-storey office building situated within the centre of Aldridge, West Midlands on the edge of the main town shopping centre. The offices benefit from onsite parking, CCTV external security, intercom entrance and lift facilities.

Aldridge is well placed for access from Walsall and Sutton Coldfield and also provides reasonable road links to the Midland motorway network.

MISREPRESENTATION ACT, 1967 London & Cambridge Properties Limited (Company Number 02895002) the registered office of which is at LCP House, Pensnett Estate, Kingswinford, West Midlands DY6 7NA its subsidiaries (as defined in section 1156 of the Companies Act 2006) associated companies and employees ("we") give notice that: Whilst these particulars are believed to be correct no guarantee or warranty is given, or implied therein, nor do they form any part of a contract. [We do our best to ensure all information in this brochure is accurate. If you find any inaccurate information, please let us know and where appropriate, we will correct it.] We make no representation that information is accurate and up to date or complete. We accept no liability for any loss or damage caused by inaccurate information. [This brochure gives a large amount of statistical information and there will inevitably be errors in it]. Intending purchasers or tenants should not rely on the particulars in this brochure as statements or representations of fact but should satisfy themselves by inspection or otherwise as to the correctness of each of them. We provide this brochure free of charge and on the basis of no liability for the information given. In no event shall we be liable to you for any direct or indirect or consequential loss, loss of profit, revenue or goodwill arising from your use of the information contained herein. All terms implied by law are excluded to the fullest extent permitted by law. No person in our employment has any authority to make or give any representation or warranty whatsoever in relation to the property. SUBJECT TO CONTRACT. We recommend that legal advice is taken on all documentation before entering into a contract. You should be aware that the Code of Practice on Commercial Leases in England and Wales strongly recommends you seek professional advice from a qualified surveyor, solicitor or licensed conveyancer before agreeing or signing a business tenancy agreement. The Code is available through professional institutions and trade associations or through the website <https://www.rics.org/uk/upholding-professional-standards/sector-standards/real-estate/code-for-leasing-business-premises-1st-edition/>. LCP's privacy notices that apply to its use of your personal information are at www.lcpgroup.co.uk/policies. The privacy notice that applies to you will depend on the nature of your relationship with LCP, and in some cases more than one may apply to you. LCP's privacy policy giving a high level overview of how LCP approaches data protection and your personal information can be found at www.lcpproperties.co.uk/uploads/files/LCP-Privacy-Web-and-Data-Policy-May-2018.pdf.

32442 JULY 2023

Viewing Strictly via prior appointment with the appointed agents:

LCP

part of IMCore

01384
400123

searchlcp.co.uk



Rob Ellis 07918 931081
REllis@lcpproperties.co.uk



Kate Ellis
kate.ellis@burleybrowne.co.uk